



HARRISON LEGGETT

NEW INSTRUCTION
PRELIMINARY DETAILS

Entire 1st Floor
CENTRO BUILDINGS 1 & 2
LONDON NW1

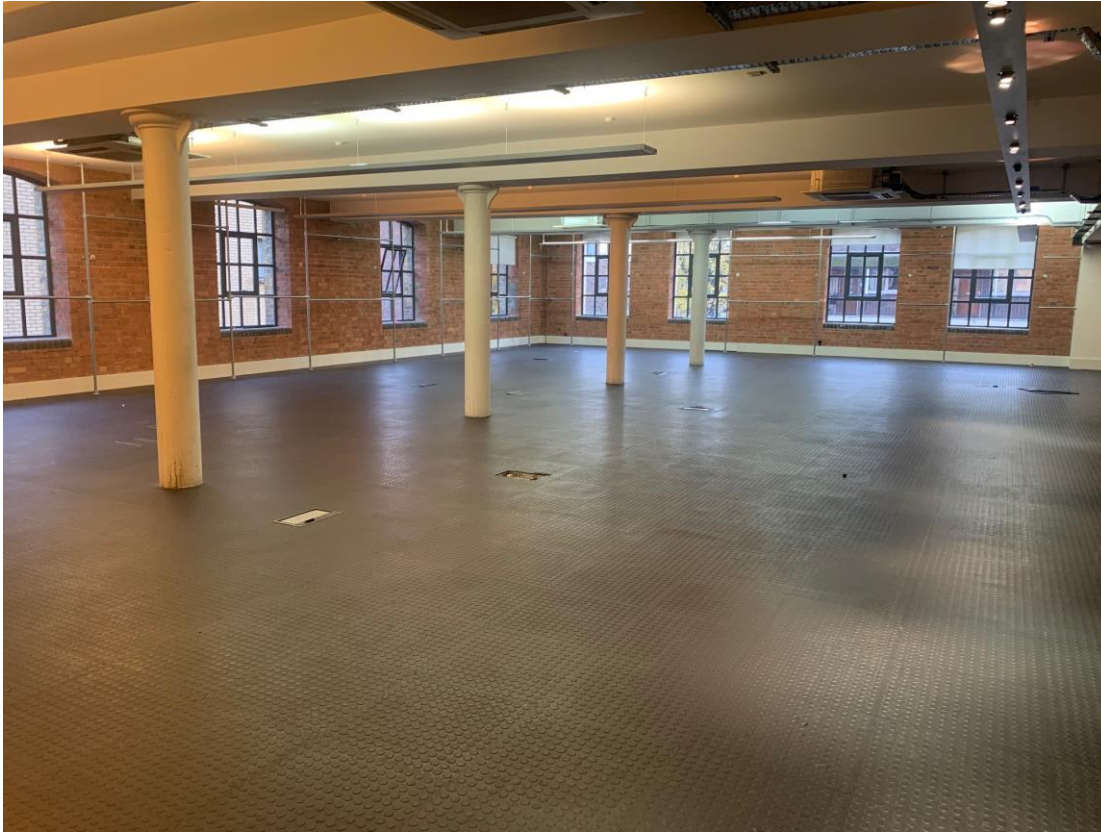
TO LET

6,661 - 14,000 SQ FT (620 – 1,330 SQ M)



16 Ingestre Place, London W1F 0JJ

0203 384 6130



LOCATION

The property is located on a prominent corner site, bounded by Mandela Street, Plender Street & Camden Street, Mornington Crescent and Camden Town Underground Stations, providing access to the Northern Line are a 5 minute walk and Kings Cross/St Pancras is approximately 15 minutes away.

DESCRIPTION

Iconic warehouse style campus which has attracted numerous fashion and creative users including French Connection and Hugo Boss. The available accommodation comprises the entire 1st floor across Centros 1 & 2 offering a mix of open plan and cellular offices/meeting rooms, with air conditioning and raised floors. The space offers excellent natural light and benefits from a superb manned ground floor reception, on site café and gym.

16 Ingestre Place, London W1F 0JJ

0203 384 6130



HARRISON LEGGETT

The building benefits from the following amenities:

AMENITIES

- EXPOSED BRICKWORK
- AIR CONDITIONED
- FULLY FITTED
- MANNED RECEPTION
- EXCELLENT NATURAL LIGHT

ACCOMMODATION

CENTRO 1 FIRST – 7,314 sq ft
CENTRO 2 FIRST - 6,661 sq ft
TOTAL – 13,975 sq ft

LEASE

New Sub Lease to December 2025.

RENT

From £47.50 per Sq Ft.

BUSINESS RATES

Rates payable £19.50 per sq ft
These figures are given as a guide please make your own enquires

SERVICE CHARGE

TBC

EPC

Rated 'B', Certificate available on application.

VIEWING

By Appointment through Agents:

Nigel Harrison
nh@harrisonleggett.co.uk

Mob: 07730 817075

16 Ingestre Place, London W1F 0JJ

0203 384 6130



HARRISON LEGGETT

Graeme Leggett

gl@harrisonleggett.co.uk

Mob: 07791 552735**Nigel Harrison**nh@harrisonleggett.co.uk**Mob: 07730 817075****Patrick Lahaise**

plahaise@hall lahaise

Mob: 07899 804825

or our joint agents-

Nick Raven @ Hanover Green**Mob: 07753 310991**

16 Ingestre Place, London W1F 0JJ

0203 384 6130